



455 Winding Brook Drive
Suite 201
Glastonbury, CT 06033

Ph: (860) 368-5300
Fax: (860) 368-5307

Memorandum

To: Andrew Prophete (National Grid NY)

From: Brian Skelly

Copy to: Richard Dana and R. Scott Deyette (NYSDEC)
Chris Schroer (EA Engineering)
Andrew Rizk (Louis Berger)
Stephanie Selmer (NYSDOH)
Dave Boram and Thor Helgason (de maximis)
Ted Leissing (National Grid NY)
Shail Pandya (AECOM)
Ronell Marshall and Clayton John (GEI Consultants, Inc.)

Date: January 28, 2013

Regarding: Weekly Community Air Monitoring Report
Clifton Former MGP Site - Operable Unit 2 (OU-2)
January 19, 2013 through January 25, 2013

Dear Andrew:

This report includes a summary of data collected during implementation of the Community Air Monitoring Plan (CAMP) at the Clifton Former MGP Site Operable Unit 2 (OU-2) in Staten Island, New York. Data collected are discussed in relation to remediation activities that occurred between January 19, 2013 and January 25, 2013.

There were no fifteen-minute exceedances of the Total Volatile Organic Compounds (TVOC), Particulate Matter (PM-10) [dust], or odor action levels associated with ground intrusive site activities during this reporting period. There were 15 minute exceedances for PM-10 [dust] at a crosswind station during non-working hours that when compared to the measurements at the upwind station, resulted in a Site Condition 1. The tables and figures accompanying this report summarize air monitoring results related to the action levels described by the CAMP Work Plan (AECOM, 2011 and GEI, 2012).

The following information is summarized in this report:

- Site construction activities
- Daily maximum 15-minute average concentrations of TVOC and PM-10 (dust) at each fixed station
- Elevated concentrations (if any)

- Meteorological data

Site Construction Activities

Construction activities during this reporting period included:

- Excavated in Temporary Fabric Structure (TFS)
- Backfilled in TFS
- Connected TIGG unit
- Tarped dump trucks
- Deconned dump trucks
- Installed decon pad
- Leveled terrain in OU-2
- Loaded clean backfill into TFS
- Loaded out soil from TFS
- Operated hoe-ram in TFS
- Prepared TFS for relocation
- Received delivery of clean backfill
- Received delivery of gravel
- Relocated bin blocks
- Relocated TFS
- Stockpiled clean soil

Data collection

Real-time fixed station monitoring for TVOC and PM-10 (dust) was performed on the OU-2 site perimeter at six locations (FAM#1 through FAM#6. Four AirLogics Classic stations equipped with gas chromatographs (GCs) were operated at FAM#2, FAM#3, FAM#4, and FAM#5 and two AirLogics Light stations were operated at FAM#1 and FAM#6.

Table 1 summarizes the target concentrations for action levels and Site Conditions described by the CAMP. Table 2 provides a daily summary of maximum fifteen-minute average ambient air concentrations from each station. The daily reports appended to this report depict more detailed and time-specific comparison of upwind and downwind measurements and site activities that is needed to determine the Site Condition.

Upwind and downwind ambient air verification samples were collected on January 25, 2013. Meteorological data collected at the on-site weather station are included in this report as Figures 1 through 4 which show a directional wind rose for the period and temperature, relative humidity, and wind speed time series for the period.

If you have any questions regarding the information in this report, please contact me.

Weekly Community Air Monitoring Report
Clifton Former MGP Site Operable Unit 2 (OU-2)
January 19, 2013 through January 25, 2013
January 29, 2013
Page 3

References

AECOM (2011). Appendix A of CERP Community Air Monitoring Plan (CAMP) Former Manufactured Gas Plant Operable Unit - 2 Remediation. Clifton, New York. August.

GEI Consultants, Inc (2012). Community Air Monitoring Plan: Clifton Former Manufactured Gas Plant Site – Operable Unit 2, Borough of Staten Island, New York. February.

New York State Department of Environmental Conservation (2010). DER-10 / Technical Guidance for Site Remediation and Investigation. Washington: Division of Environmental Remediation, December. Appendix 1-A. May.

Table 1 - Action Levels and Site Conditions
 Community Air Monitoring Program
 Clifton Former MGP Site Operable Unit 2
 Borough of Staten Island, New York

| | Alert Level | Action Level | Site Condition 1 | Site Condition 2 | Site Condition 3 |
|----------------------------|-----------------------|-----------------------|-------------------------|--|-----------------------------|
| TVOC (15-minute) | 3.7 ppm | 5.0 ppm | < 3.7 ppm | ≥ 3.7 ppm, < 5.0 ppm | ≥ 5.0 ppm |
| TVOC (1-minute) | NA | 25 ppm | < 25 ppm | NA | ≥ 25 ppm |
| PM-10 (15-minute) | 100 ug/m ³ | 150 ug/m ³ | < 100 ug/m ³ | ≥ 100 ug/m ³ , < 150 ug/m ³ | ≥ 150 ug/m ³ |
| Odor (15-minute) | Odors / Complaints | NA | No odors | NA | 3 (n-butanol) |
| HCN (15-minute) | Visual Detection | NA | < 0.6 ppm | ≥ 0.6 ppm (4-gas meter) | ≥ 0.6 ppm (Draeger tube) |
| Naphthalene (15-minute) | NA | NA | < 440 ug/m ³ | ≥ 330 ug/m ³ , < 440 ug/m ³ | ≥ 440 ug/m ³ |

Notes:

¹ Alert Levels are not established by the NYSDOH or NYSDEC and are internally established concentration levels for total volatile organic compounds. Alert Levels are set below the levels established by the NYSDOH so that actions can be taken prior to exceeding a NYSDOH threshold. An Alert Level serves as a screening tool to trigger contingent measures if necessary, to assist in minimizing off-site transport of contaminants during remedial activities

² Response Levels and Action Levels are not defined in Appendix 1A of the New York State Department of Environmental Conservation *DER-10 / Technical Guidance for Site Investigation and Remediation* (NYSDEC, 2010)

ug/m³ - micrograms per cubic meter

ppmv - parts per million by volume

TVOC - total volatile organic compounds

PM-10 - particulate matter (i.e. dust) less than 10 microns in diameter

HCN - hydrogen cyanide

NA - not applicable

Table 2. Daily Maximum 15-Minute Average Concentrations of TVOC and PM-10
 Community Air Monitoring Program
 Clifton Former MGP Site Operable Unit 2
 Borough of Staten Island, New York

| Date | TVOC | | | | | | PM-10 | | | | | |
|-----------|-------|-------|-------|-------|-------|-------|----------------------|-------|-------|-------|-------|-------|
| | (ppm) | | | | | | (ug/m ³) | | | | | |
| | FAM#1 | FAM#2 | FAM#3 | FAM#4 | FAM#5 | FAM#6 | FAM#1 | FAM#2 | FAM#3 | FAM#4 | FAM#5 | FAM#6 |
| 1/19/2013 | 0.2 | 0.1 | 0.2 | 0.1 | 0.1 | 0.0 | 2 | 7 | 1.0 | 5 | 8 | 22 |
| 1/20/2013 | 0.1 | 0.1 | 0.2 | 0.0 | 0.1 | 0.0 | 3 | 8 | 1.0 | 1 | 8 | 21 |
| 1/21/2013 | 0.2 | 0.6 | 0.2 | 0.0 | 0.1 | 0.0 | 27 | 11 | 7 | 19 | 10 | 33 |
| 1/22/2013 | 0.1 | 0.4 | 0.2 | 0.1 | 0.2 | 0.1 | 19 | 48 | 9 | 38 | 10 | 30 |
| 1/23/2013 | 0.0 | 0.1 | 0.2 | 0.1 | 0.5 | 0.0 | 34 | 43 | 20 | 33 | 74 | 172 |
| 1/24/2013 | 0.0 | 0.3 | 0.2 | 0.2 | 0.8 | 0.0 | 23 | 83 | 25 | 36 | 27 | 83 |
| 1/25/2013 | 0.0 | 0.5 | 0.3 | 0.1 | 0.2 | 0.0 | 25 | 29 | 13 | 41 | 16 | 42 |
| Average | 0.1 | 0.3 | 0.2 | 0.1 | 0.3 | 0.0 | 19 | 33 | 11 | 25 | 22 | 58 |
| Maximum | 0.2 | 0.6 | 0.3 | 0.2 | 0.8 | 0.1 | 34 | 83 | 25 | 41 | 74 | 172 |

Notes:

FAM - fixed air monitoring station location

ug/m³ - micrograms per cubic meter

ppmv - parts per million by volume

TVOC - total volatile organic compounds

PM-10 - particulate matter (i.e. dust) less than 10 microns in diameter

Figures 1-4
Meteorological Data
Weekly Community Air Monitoring Report
Clifton Former MGP Site Operable Unit 2
Borough of Staten Island, New York

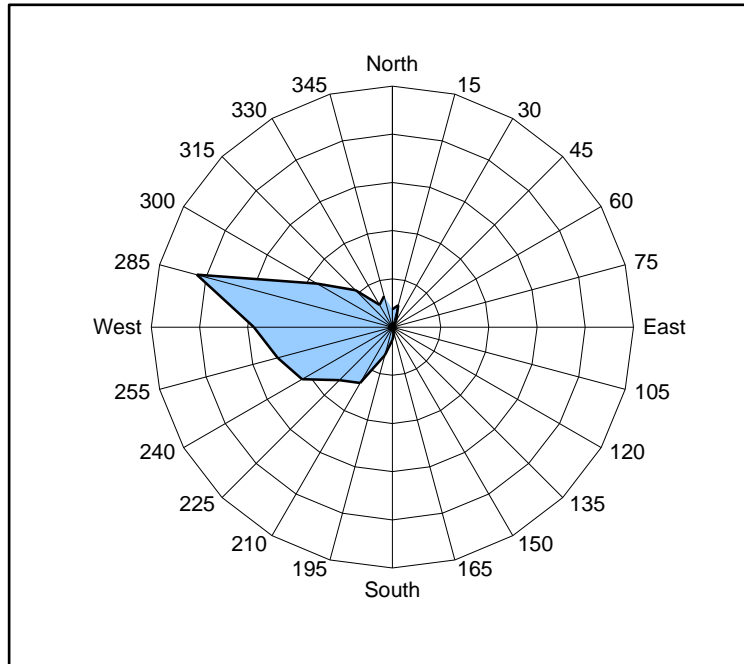


Figure 1. Wind rose for the period 01/19/13 through 01/25/13 collected during CAMP implementation at the Clifton Former MGP Site - Operable Unit 2. Wind direction data used to create the wind rose were calculated from 1-minute data.

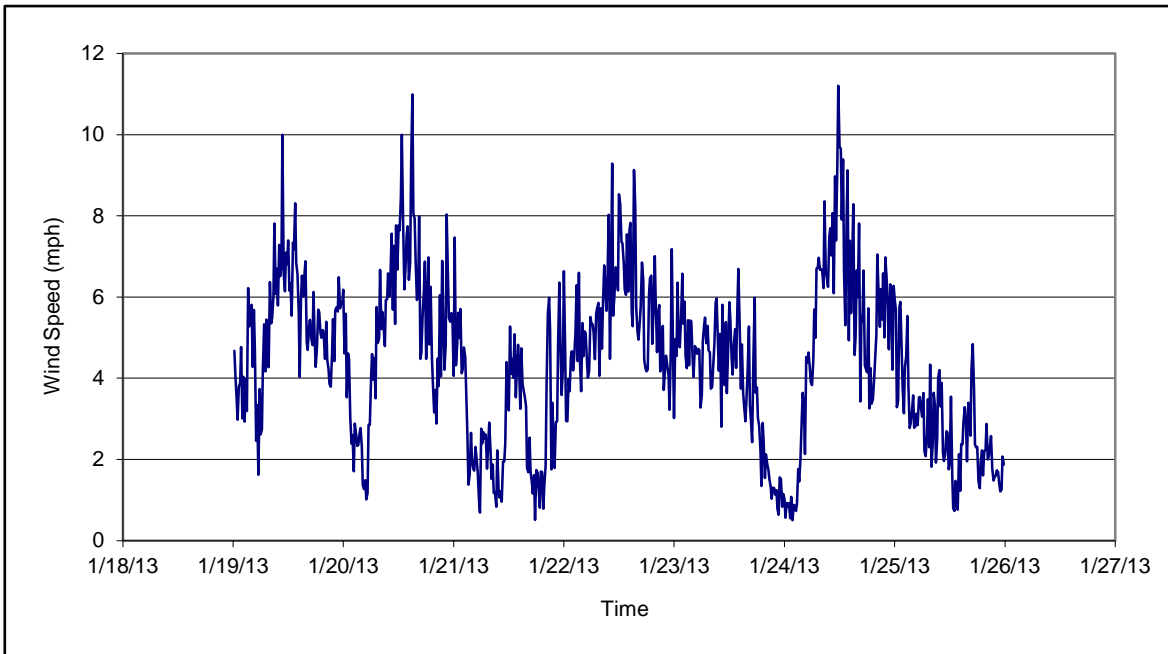


Figure 2. Wind speed for the period 01/19/13 through 01/25/13 collected during CAMP implementation at the Clifton Former MGP Site - Operable Unit 2. Data are 15-minute averages.

Figures 1-4
Meteorological Data
Weekly Community Air Monitoring Report
Clifton Former MGP Site Operable Unit 2
Borough of Staten Island, New York

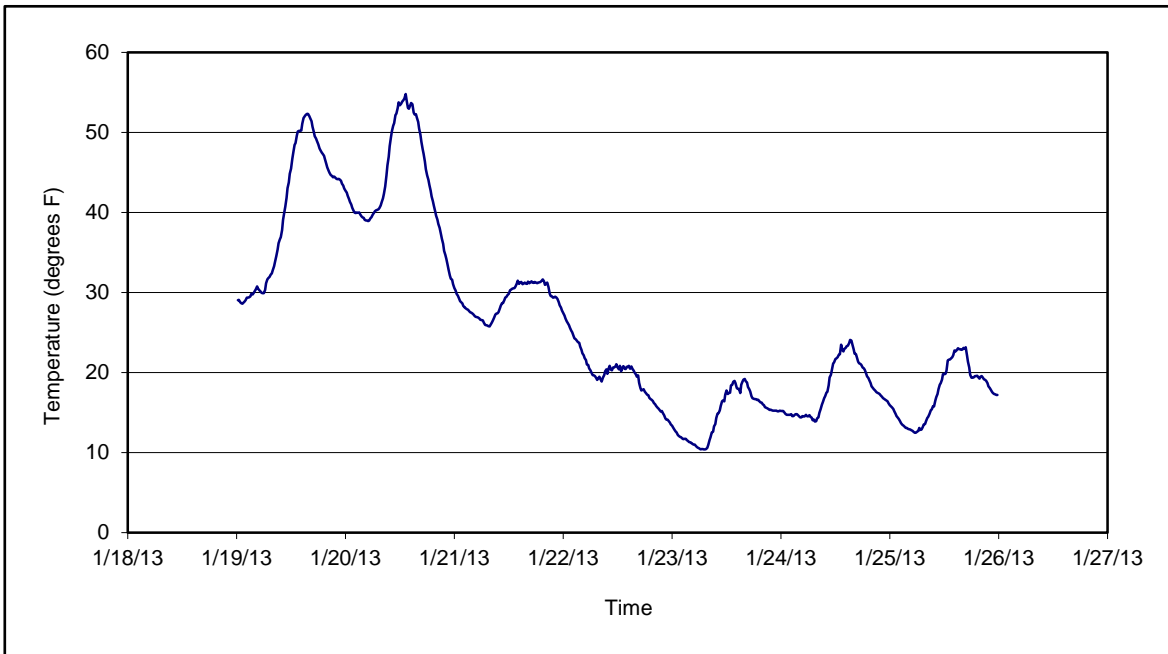


Figure 3. Temperature for the period 01/19/13 through 01/25/13 collected during CAMP implementation at the Clifton Former MGP Site - Operable Unit 2. Data are 15-minute averages.

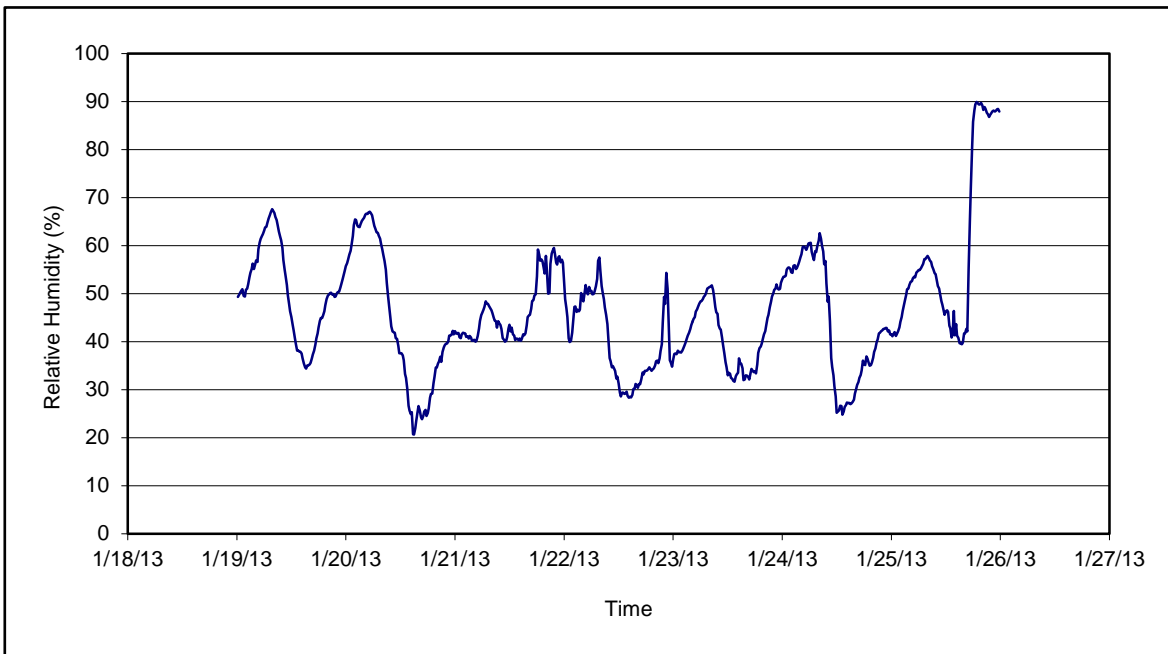


Figure 4. Relative humidity for the period 01/19/13 through 01/25/13 collected during CAMP implementation at the Clifton Former MGP Site - Operable Unit 2. Data are 15-minute averages.

Daily Field Report
Community Air Monitoring Program
Clifton Former MGP Site Operable Unit 2
Borough of Staten Island, New York

| System Operations | | | | | General Observations | | | | | | | | | |
|--|----------------|-----------------|------------|----------|--|-----------------------|----------------------|---------------------|--|-----------------------------------|--------------------------------|---|---------------|--|
| Sampling Date | | 1/21/2013 | | | General Weather Conditions: Clear- ~ 26°F - ~31°F | | | | | | | | | |
| System Start Time | | continuous | | | General Description of Site Activities: Health & Safety Meeting Continuous Air Monitoring Loaded clean backfill into TFS Deconned dump trucks Received delivery of clean backfill Relocated bin blocks Backfilled in TFS Prepared TFS for relocation | | | | | | | | | |
| System Stop Time | | continuous | | | | | | | | | | | | |
| Total Hrs Monitored | | 24 | | | | | | | | | | | | |
| System Calibrations (Time/Status) | | Ok 0631-0807 | | | | | | | | | | | | |
| Date | Alert Trigger | Station | Start Time | End Time | # of 15-min Periods | Wind Dir. | Upwind/ Downwind | Upwind Station(s) | 15-Minute Downwind-Upwind Concentration Min** Max** | | Site Condition | Site Activity During the Period (if applicable) | Actions Taken | |
| 01/21/13 | No exceedances | | | | | | | | | | | | None taken | |
| | | | | | | | | | | | | | | |
| | | | | | | | | | | | | | | |
| | | | | | | | | | | | | | | |
| | | | | | | | | | | | | | | |
| | | | | | | | | | | | | | | |
| | | | | | | | | | | | | | | |
| | | | | | | | | | | | | | | |
| | | | | | | | | | | | | | | |
| | | | | | | | | | | | | | | |
| | | | | | | | | | | | | | | |
| | | | | | | | | | | | | | | |
| | | | | | | | | | | | | | | |
| | | | | | | | | | | | | | | |
| | | | | | | | | | | | | | | |
| | | | | | | | | | | | | | | |
| | | | | | | | | | | | | | | |
| | | | | | | | | | | | | | | |
| | | | | | | | | | | | | | | |
| | | | | | | | | | | | | | | |
| | | | | | | | | | | | | | | |
| | | | | | | | | | | | | | | |
| | | | | | | | | | | | | | | |
| | | | | | | | | | | | | | | |
| | | | | | | | | | | | | | | |
| Comments: | | | | | | | | | | | | | | |
| Alert Limit: | | | | | PM-10 (15-min) | 100 ug/m ³ | TVOC (15-min) | 3.7 ppm | TVOC (1-min) | - | Odor Intensity (15-min) | - | | |
| Action Limit: | | | | | 150 ug/m ³ | 5.0 ppm | 25 ppm | 3 (n-butanol scale) | | | | | | |
| Notes: | | | | | | | | | | | | | | |
| * Wind directions are presented by octant (i.e. N, NE, E, SE, S, SW, W, NW). | | | | | PM-10 - particulate matter (i.e. dust) less than 10 microns in diameter | | | | | | | | | |
| ** Upwind minus downwind concentrations are a time specific comparison. | | | | | TVOC - total volatile organic compounds | | | | | | | | | |
| FAM - Fixed Air Monitoring station location | | | | | NA - not applicable | | | | | Field Representative: R. Marshall | | | | |
| ug/m ³ - micrograms per cubic meter | | | | | ND - no data available | | | | | Date: 1/21/2013 | | | | |
| ppmv - parts per million by volume | | | | | | | | | | | | | | |



Daily Field Report
 Community Air Monitoring Program
 Clifton Former MGP Site Operable Unit 2
 Borough of Staten Island, New York

| System Operations | | | | | General Observations | | | | | | | | |
|--|----------------|-----------------|------------|----------|--|---|---------------------|--------------------------------|--|--|----------------|--|---------------|
| Sampling Date | | 1/22/2013 | | | General Weather Conditions: | | | | | | | | |
| System Start Time | | continuous | | | Clear- ~ 18°F - ~20°F | | | | | | | | |
| System Stop Time | | continuous | | | General Description of Site Activities: | | | | | | | | |
| Total Hrs Monitored | | 24 | | | | | | | | | | | |
| System Calibrations (Time/Status) | | Ok 0637-0807 | | | Health & Safety Meeting Continuous Air Monitoring Relocated Temporary Fabric Structure Connected TIGG unit Received delivery of clean backfill Backfilling in TFS | | | | | | | | |
| Date | Alert Trigger | Station | Start Time | End Time | # of 15-min Periods | Wind Dir. | Upwind/Downwind | Upwind Station(s) | 15-Minute Downwind-Upwind Concentration Min** Max** | | Site Condition | Site Activity During the Period (if applicable) | Actions Taken |
| 01/22/13 | No exceedances | | | | | | | | | | | | None taken |
| | | | | | | | | | | | | | |
| | | | | | | | | | | | | | |
| | | | | | | | | | | | | | |
| | | | | | | | | | | | | | |
| | | | | | | | | | | | | | |
| | | | | | | | | | | | | | |
| | | | | | | | | | | | | | |
| | | | | | | | | | | | | | |
| | | | | | | | | | | | | | |
| | | | | | | | | | | | | | |
| | | | | | | | | | | | | | |
| | | | | | | | | | | | | | |
| | | | | | | | | | | | | | |
| Comments: | | | | | | | | | | | | | |
| | | | | | PM-10 (15-min) | TVOC (15-min) | TVOC (1-min) | Odor Intensity (15-min) | | | | | |
| Alert Limit: | | | | | 100 ug/m ³ | 3.7 ppm | - | - | | | | | |
| Action Limit: | | | | | 150 ug/m ³ | 5.0 ppm | 25 ppm | 3 (n-butanol scale) | | | | | |
| Notes: | | | | | | | | | | | | | |
| * Wind directions are presented by octant (i.e. N, NE, E, SE, S, SW, W, NW). | | | | | | PM-10 - particulate matter (i.e. dust) less than 10 microns in diameter | | | | | | | |
| ** Upwind minus downwind concentrations are a time specific comparison. | | | | | | TVOC - total volatile organic compounds | | | | | | | |
| FAM - Fixed Air Monitoring station location | | | | | | NA - not applicable | | | | | | | |
| ug/m ³ - micrograms per cubic meter | | | | | | ND - no data available | | | | | | | |
| ppmv - parts per million by volume | | | | | | Field Representative: R. Marshall | | Date: 1/22/2013 | | | | | |



Daily Field Report
Community Air Monitoring Program
Clifton Former MGP Site Operable Unit 2
Borough of Staten Island, New York

| System Operations | | | | | General Observations | | | | | | | | | |
|--|---------------|-----------------|------------|----------|---|-----------|---|-------------------|--|----------------------|--------------------------------|--|------------------|--|
| Sampling Date | | 1/23/2013 | | | General Weather Conditions: Clear - ~ 11°F - ~18°F | | | | | | | | | |
| System Start Time | | continuous | | | General Description of Site Activities: | | | | | | | | | |
| System Stop Time | | continuous | | | Health & Safety Meeting | | | | | Deconned dump trucks | | | | |
| Total Hrs Monitored | | 24 | | | Continuous Air Monitoring | | | | | Tarped dump trucks | | | | |
| System Calibrations (Time/Status) | | Ok 0656-0824 | | | Excavated in Temporary Fabric Structure (TFS) | | | | | Installed decon pad | | | | |
| | | | | | Received delivery of clean backfill | | | | | | | | | |
| | | | | | Received delivery of gravel | | | | | | | | | |
| | | | | | Backfilled in TFS | | | | | | | | | |
| Date | Alert Trigger | Station | Start Time | End Time | # of 15-min Periods | Wind Dir. | Upwind/Downwind | Upwind Station(s) | 15-Minute Downwind-Upwind Concentration Min** Max** | | Site Condition | Site Activity During the Period (if applicable) | Actions Taken | |
| 01/23/13 | PM-10 | FAM#6 | 18:36 | 18:36 | 1 | WNW | CW/UW | N/A | 101 | 101 | 1 | After working hours | No actions taken | |
| 01/23/13 | PM-10 | FAM#6 | 21:25 | 22:29 | 48 | WNW | CW/UW | N/A | 101 | 172 | 1 | After working hours | No actions taken | |
| 01/23/13 | PM-10 | FAM#6 | 23:28 | 23:41 | 13 | WNW | CW/UW | N/A | 103 | 145 | 1 | After working hours | No actions taken | |
| | | | | | | | | | | | | | | |
| | | | | | | | | | | | | | | |
| | | | | | | | | | | | | | | |
| | | | | | | | | | | | | | | |
| | | | | | | | | | | | | | | |
| | | | | | | | | | | | | | | |
| | | | | | | | | | | | | | | |
| | | | | | | | | | | | | | | |
| | | | | | | | | | | | | | | |
| | | | | | | | | | | | | | | |
| | | | | | | | | | | | | | | |
| | | | | | | | | | | | | | | |
| | | | | | | | | | | | | | | |
| | | | | | | | | | | | | | | |
| | | | | | | | | | | | | | | |
| | | | | | | | | | | | | | | |
| Comments: | | | | | | | | | | | | | | |
| | | | | | PM-10 (15-min) | | TVOC (15-min) | | TVOC (1-min) | | Odor Intensity (15-min) | | | |
| | | | | | Alert Limit: 100 ug/m ³ | | 3.7 ppm | | - | | - | | | |
| | | | | | Action Limit: 150 ug/m ³ | | 5.0 ppm | | 25 ppm | | 3 (n-butanol scale) | | | |
| Notes: | | | | | | | | | | | | | | |
| * Wind directions are presented by octant (i.e. N, NE, E, SE, S, SW, W, NW). | | | | | | | PM-10 - particulate matter (i.e. dust) less than 10 microns in diameter | | | | | | | |
| ** Upwind minus downwind concentrations are a time specific comparison. | | | | | | | TVOC - total volatile organic compounds | | | | | | | |
| FAM - Fixed Air Monitoring station location | | | | | | | NA - not applicable | | | | | | | |
| ug/m ³ - micrograms per cubic meter | | | | | | | ND - no data available | | | | | | | |
| ppmv - parts per million by volume | | | | | | | | | Field Representative: R. Marshall | | | | | |
| | | | | | | | | | Date: 1/23/2013 | | | | | |



Daily Field Report
Community Air Monitoring Program
Clifton Former MGP Site Operable Unit 2
Borough of Staten Island, New York

| System Operations | | | | | General Observations | | | | | | | | |
|--|----------------|--|------------|----------|----------------------------------|-----------|------------------|--------------------------|--|--|----------------|---|---------------|
| Sampling Date 1/24/2013 System Start Time continuous System Stop Time continuous Total Hrs Monitored 24 System Calibrations (Time/Status) Ok 0643-0944 | | General Weather Conditions: Clear- ~ 14°F - ~21°F General Description of Site Activities: Health & Safety Meeting Continuous Air Monitoring Excavated in Temporary Fabric Structure (TFS) Received delivery of clean backfill Received delivery of gravel Backfilled in TFS Decconned dump trucks Tarped dump trucks Stockpiled clean soil Operated hoe-ram in TFS | | | | | | | | | | | |
| Date | Alert Trigger | Station | Start Time | End Time | # of 15-min Periods | Wind Dir. | Upwind/ Downwind | Upwind Station(s) | 15-Minute Downwind-Upwind Concentration Min** Max** | | Site Condition | Site Activity During the Period (if applicable) | Actions Taken |
| 1/24/2013 | No exceedances | | | | | | | | | | | | None taken |
| | | | | | | | | | | | | | |
| | | | | | | | | | | | | | |
| | | | | | | | | | | | | | |
| | | | | | | | | | | | | | |
| | | | | | | | | | | | | | |
| | | | | | | | | | | | | | |
| | | | | | | | | | | | | | |
| | | | | | | | | | | | | | |
| | | | | | | | | | | | | | |
| | | | | | | | | | | | | | |
| | | | | | | | | | | | | | |
| | | | | | | | | | | | | | |
| | | | | | | | | | | | | | |
| | | | | | | | | | | | | | |
| | | | | | | | | | | | | | |
| | | | | | | | | | | | | | |
| Comments: | | | | | | | | | | | | | |
| Alert Limit: PM-10 (15-min) 100 ug/m ³ Action Limit: 150 ug/m ³ | | | | | TVOC (15-min) 3.7 ppm 5.0 ppm | | | TVOC (1-min) - 25 ppm | | Odor Intensity (15-min) - 3 (n-butanol scale) | | | |
| Notes: * Wind directions are presented by octant (i.e. N, NE, E, SE, S, SW, W, NW). ** Upwind minus downwind concentrations are a time specific comparison. FAM - Fixed Air Monitoring station location ug/m ³ - micrograms per cubic meter ppmv - parts per million by volume PM-10 - particulate matter (i.e. dust) less than 10 microns in diameter TVOC - total volatile organic compounds NA - not applicable ND - no data available Field Representative: R. Marshall Date: 1/24/2013 | | | | | | | | | | | | | |

Daily Field Report

Community Air Monitoring Program

Clifton Former MGP Site Operable Unit 2

Borough of Staten Island, New York

| System Operations | | | | | General Observations | | | | | | | | |
|--|-----------------|---------|------------|----------|--|----------------------|---|--------------------------------|--|--|----------------|--|---------------|
| Sampling Date | 1/25/2013 | | | | General Weather Conditions: Clear- ~ 14°F - ~21°F | | | | | | | | |
| System Start Time | continuous | | | | General Description of Site Activities: Health & Safety Meeting Continuous Air Monitoring Excavated in Temporary Fabric Structure (TFS) Received delivery of clean backfill Received delivery of gravel Backfilled in TFS Leveled terrain in OU-2 Deconned dump trucks Tarped dump trucks Stockpiled clean soil Operated hoe-ram in TFS Loaded out soil from TFS | | | | | | | | |
| System Stop Time | continuous | | | | | | | | | | | | |
| Total Hrs Monitored | 24 | | | | | | | | | | | | |
| System Calibrations (Time/Status) | Ok 0824-0936 | | | | | | | | | | | | |
| | | | | | | | | | | | | | |
| Date | Alert Trigger | Station | Start Time | End Time | # of 15-min Periods | Wind Dir. | Upwind/Downwind | Upwind Station(s) | 15-Minute Downwind-Upwind Concentration Min** Max** | | Site Condition | Site Activity During the Period (if applicable) | Actions Taken |
| 1/25/2013 | No exceedances | | | | | | | | | | | | None taken |
| | | | | | | | | | | | | | |
| | | | | | | | | | | | | | |
| | | | | | | | | | | | | | |
| | | | | | | | | | | | | | |
| | | | | | | | | | | | | | |
| | | | | | | | | | | | | | |
| | | | | | | | | | | | | | |
| | | | | | | | | | | | | | |
| | | | | | | | | | | | | | |
| | | | | | | | | | | | | | |
| | | | | | | | | | | | | | |
| | | | | | | | | | | | | | |
| | | | | | | | | | | | | | |
| | | | | | | | | | | | | | |
| | | | | | | | | | | | | | |
| | | | | | | | | | | | | | |
| Comments: | | | | | | | | | | | | | |
| | | | | | PM-10 (15-min) | TVOC (15-min) | TVOC (1-min) | Odor Intensity (15-min) | | | | | |
| Alert Limit: | | | | | 100 ug/m ³ | 3.7 ppm | - | - | | | | | |
| Action Limit: | | | | | 150 ug/m ³ | 5.0 ppm | 25 ppm | 3 (n-butanol scale) | | | | | |
| Notes: | | | | | | | | | | | | | |
| * Wind directions are presented by octant (i.e. N, NE, E, SE, S, SW, W, NW). | | | | | | | PM-10 - particulate matter (i.e. dust) less than 10 microns in diameter | | | | | | |
| ** Upwind minus downwind concentrations are a time specific comparison. | | | | | | | TVOC - total volatile organic compounds | | | | | | |
| FAM - Fixed Air Monitoring station location | | | | | | | NA - not applicable | | | | | | |
| ug/m ³ - micrograms per cubic meter | | | | | | | ND - no data available | | | | | | |
| ppmv - parts per million by volume | | | | | | | Field Representative: R. Marshall | | | | | | |
| | | | | | | | Date: 1/25/2013 | | | | | | |
| Page 1 of 1 | | | | | | | | | | | | | |

