



455 Winding Brook Drive
Suite 201
Glastonbury, CT 06033

Ph: (860) 368-5300
Fax: (860) 368-5307

Memorandum

To: Andrew Prophete (National Grid NY)

From: Brian Skelly

Copy to: Richard Dana and R. Scott Deyette (NYSDEC)
Chris Schroer (EA Engineering)
Andrew Rizk (Louis Berger)
Stephanie Selmer (NYSDOH)
Dave Boram and Thor Helgason (de maximis)
Ted Leissing (National Grid NY)
Shail Pandya (AECOM)
Ronell Marshall and Clayton John (GEI Consultants, Inc.)

Date: February 11, 2013

Regarding: Weekly Community Air Monitoring Report
Clifton Former MGP Site - Operable Unit 2 (OU-2)
February 2, 2013 through February 8, 2013

Dear Andrew:

This report includes a summary of data collected during implementation of the Community Air Monitoring Plan (CAMP) at the Clifton Former MGP Site Operable Unit 2 (OU-2) in Staten Island, New York. Data collected are discussed in relation to remediation activities that occurred between February 2, 2013 and February 8, 2013.

There were no fifteen-minute exceedances of the Total Volatile Organic Compounds (TVOC), Particulate Matter (PM-10) [dust], or odor action levels associated with ground intrusive site activities during this reporting period. The tables and figures accompanying this report summarize air monitoring results related to the action levels described by the CAMP Work Plan (AECOM, 2011 and GEI, 2012).

The following information is summarized in this report:

- Site construction activities
- Daily maximum 15-minute average concentrations of TVOC and PM-10 (dust) at each fixed station
- Elevated concentrations (if any)
- Meteorological data

Site Construction Activities

Construction activities during this reporting period included:

- Excavated in Temporary Fabric Structure (TFS)
- Backfilled in TFS
- Deconned dump trucks
- Leveled soil in TFS
- Loaded out soil from TFS
- Operated hoe-ram in TFS
- Operated roller in TFS
- Performed shallow excavation in OU-2
- Received delivery of clean backfill and gravel
- Relocated Bin-Blocks
- Relocated skid plates
- Relocated TFS
- Removed TIGG unit from TFS
- Stockpiled clean soil
- Tarped dump trucks
- Tested soil for density TFS
- Transported clean soil from inside of TFS
- Transported soil into TFS
- Attached TIGG unit to TFS

Data collection

Real-time fixed station monitoring for TVOC and PM-10 (dust) was performed on the OU-2 site perimeter at six locations (FAM#1 through FAM#6. Four AirLogics Classic stations equipped with gas chromatographs (GCs) were operated at FAM#2, FAM#3, FAM#4, and FAM#5 and two AirLogics Light stations were operated at FAM#1 and FAM#6.

Table 1 summarizes the target concentrations for action levels and Site Conditions described by the CAMP. Table 2 provides a daily summary of maximum fifteen-minute average ambient air concentrations from each station. The daily reports appended to this report depict more detailed and time-specific comparison of upwind and downwind measurements and site activities that is needed to determine the Site Condition.

Upwind and downwind ambient air verification samples were collected on February 6, 2013. Meteorological data collected at the on-site weather station are included in this report as Figures 1 through 4 which show a directional wind rose for the period and temperature, relative humidity, and wind speed time series for the period.

If you have any questions regarding the information in this report, please contact me.

Weekly Community Air Monitoring Report
Clifton Former MGP Site Operable Unit 2 (OU-2)
February 2, 2013 through February 8, 2013
February 11, 2013
Page 3

References

AECOM (2011). Appendix A of CERP Community Air Monitoring Plan (CAMP) Former Manufactured Gas Plant Operable Unit - 2 Remediation. Clifton, New York. August.

GEI Consultants, Inc (2012). Community Air Monitoring Plan: Clifton Former Manufactured Gas Plant Site – Operable Unit 2, Borough of Staten Island, New York. February.

New York State Department of Environmental Conservation (2010). DER-10 / Technical Guidance for Site Remediation and Investigation. Washington: Division of Environmental Remediation, December. Appendix 1-A. May.

Table 1 - Action Levels and Site Conditions
Community Air Monitoring Program
Clifton Former MGP Site Operable Unit 2
Borough of Staten Island, New York

	Alert Level	Action Level	Site Condition 1	Site Condition 2	Site Condition 3
TVOC (15-minute)	3.7 ppm	5.0 ppm	< 3.7 ppm	≥ 3.7 ppm, < 5.0 ppm	≥ 5.0 ppm
TVOC (1-minute)	NA	25 ppm	< 25 ppm	NA	≥ 25 ppm
PM-10 (15-minute)	100 ug/m ³	150 ug/m ³	< 100 ug/m ³	≥ 100 ug/m ³ , < 150 ug/m ³	≥ 150 ug/m ³
Odor (15-minute)	Odors / Complaints	NA	No odors	NA	3 (n-butanol)
HCN (15-minute)	Visual Detection	NA	< 0.6 ppm	≥ 0.6 ppm (4-gas meter)	≥ 0.6 ppm (Draeger tube)
Naphthalene (15-minute)	NA	NA	< 440 ug/m ³	≥ 330 ug/m ³ , < 440 ug/m ³	≥ 440 ug/m ³

Notes:

¹ Alert Levels are not established by the NYSDOH or NYSDEC and are internally established concentration levels for total volatile organic compounds. Alert Levels are set below the levels established by the NYSDOH so that actions can be taken prior to exceeding a NYSDOH threshold. An Alert Level serves as a screening tool to trigger contingent measures if necessary, to assist in minimizing off-site transport of contaminants during remedial activities

² Response Levels and Action Levels are not defined in Appendix 1A of the New York State Department of Environmental Conservation *DER-10 / Technical Guidance for Site Investigation and Remediation* (NYSDEC, 2010)

ug/m³ - micrograms per cubic meter

ppmv - parts per million by volume

TVOC - total volatile organic compounds

PM-10 - particulate matter (i.e. dust) less than 10 microns in diameter

HCN - hydrogen cyanide

NA - not applicable

Table 2. Daily Maximum 15-Minute Average Concentrations of TVOC and PM-10
 Community Air Monitoring Program
 Clifton Former MGP Site Operable Unit 2
 Borough of Staten Island, New York

Date	TVOC						PM-10					
	(ppm)						(ug/m ³)					
	FAM#1	FAM#2	FAM#3	FAM#4	FAM#5	FAM#6	FAM#1	FAM#2	FAM#3	FAM#4	FAM#5	FAM#6
2/2/2013	0.1	0.0	0.2	0.0	0.1	0.0	1	6	4	46	13	8
2/3/2013	0.0	0.0	0.2	0.0	0.1	0.0	1	6	13	48	29	15
2/4/2013	0.1	0.1	0.4	0.3	0.2	0.0	34	26	15	49	31	30
2/5/2013	0.1	0.4	0.3	0.2	0.3	0.3	87	35	18	27	37	72
2/6/2013	0.1	0.1	0.2	0.1	0.3	0.0	98	59	38	43	60	64
2/7/2013	0.1	0.2	0.3	0.1	0.3	0.0	45	30	15	42	22	37
2/8/2013	0.1	3.5	0.4	0.5	0.5	0.0	30	13	9	44	13	53
Average	0.1	0.6	0.3	0.2	0.3	0.1	42	25	16	43	29	40
Maximum	0.1	3.5	0.4	0.5	0.5	0.3	98	59	38	49	60	72

Notes:

FAM - fixed air monitoring station location

ug/m³ - micrograms per cubic meter

ppmv - parts per million by volume

TVOC - total volatile organic compounds

PM-10 - particulate matter (i.e. dust) less than 10 microns in diameter

Figures 1-4
Meteorological Data
Weekly Community Air Monitoring Report
Clifton Former MGP Site Operable Unit 2
Borough of Staten Island, New York

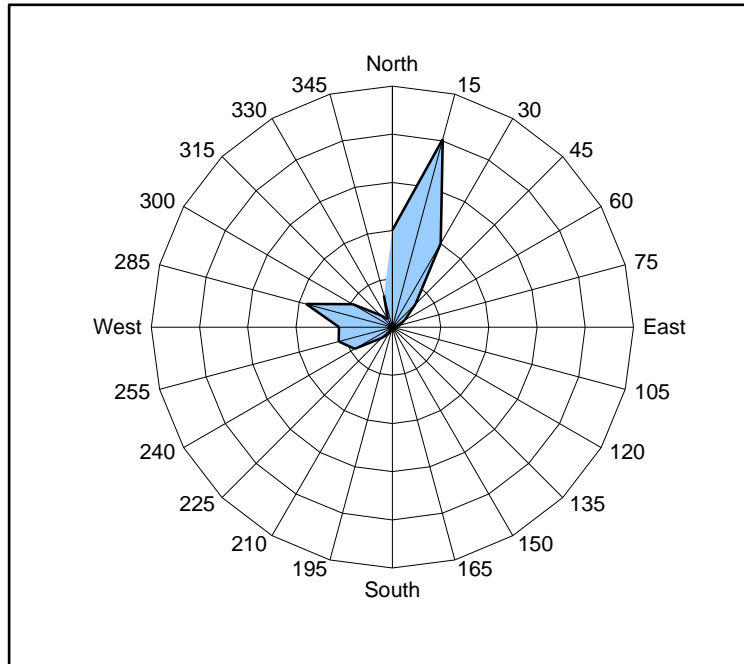


Figure 1. Wind rose for the period 02/02/13 through 02/08/13 collected during CAMP implementation at the Clifton Former MGP Site - Operable Unit 2. Wind direction data used to create the wind rose were calculated from 1-minute data.

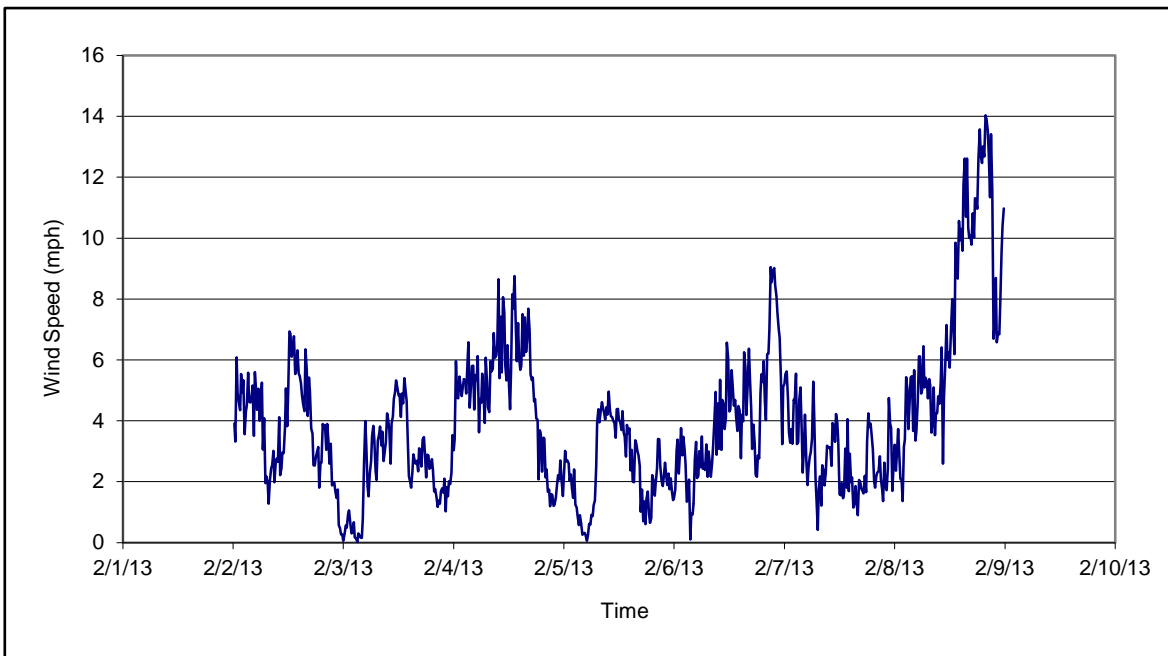


Figure 2. Wind speed for the period 02/02/13 through 02/08/13 collected during CAMP implementation at the Clifton Former MGP Site - Operable Unit 2. Data are 15-minute averages.

Figures 1-4
Meteorological Data
Weekly Community Air Monitoring Report
Clifton Former MGP Site Operable Unit 2
Borough of Staten Island, New York

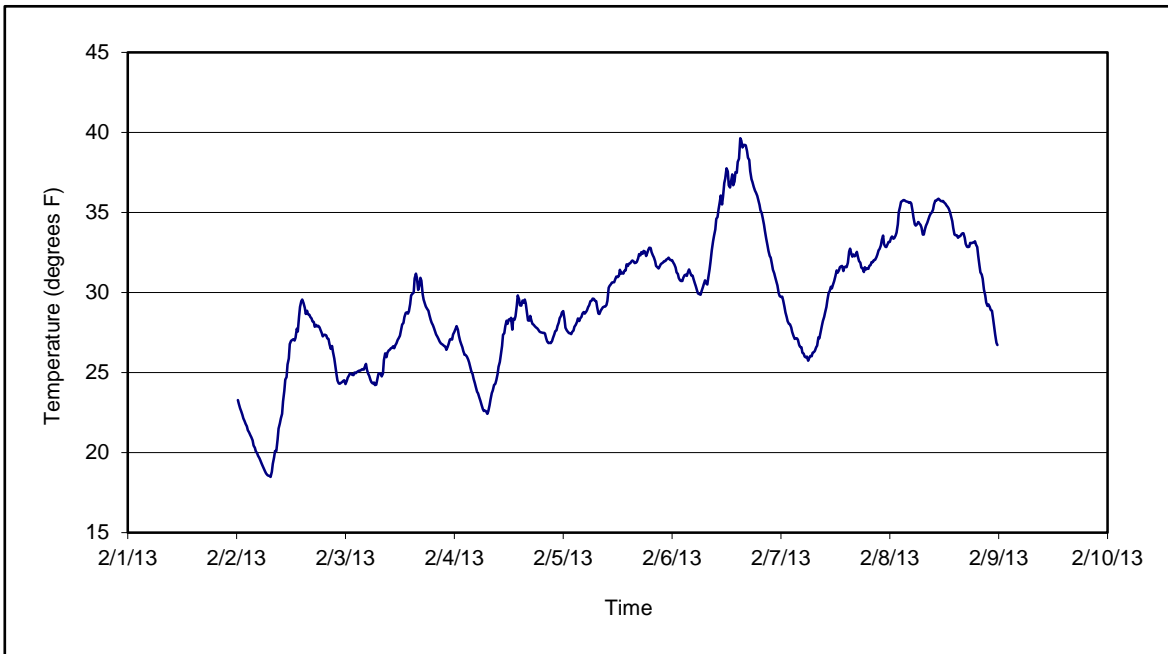


Figure 3. Temperature for the period 02/02/13 through 02/08/13 collected during CAMP implementation at the Clifton Former MGP Site - Operable Unit 2. Data are 15-minute averages.

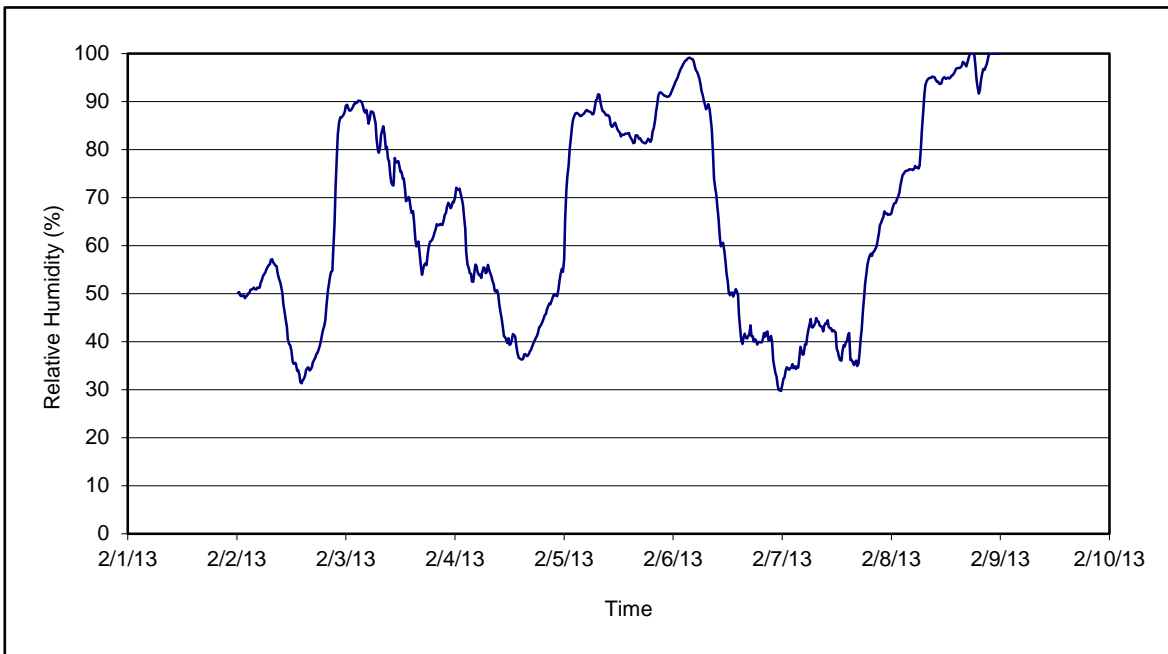


Figure 4. Relative humidity for the period 02/02/13 through 02/08/13 collected during CAMP implementation at the Clifton Former MGP Site - Operable Unit 2. Data are 15-minute averages.

Daily Field Report
Community Air Monitoring Program
Clifton Former MGP Site Operable Unit 2
Borough of Staten Island, New York

System Operations					General Observations								
Sampling Date		2/4/2013			General Weather Conditions: Clear ~ 22°F - ~28°F								
System Start Time		continuous			General Description of Site Activities: Health & Safety Meeting Continuous Air Monitoring Excavated in Temporary Fabric Structure (TFS) Received delivery of clean backfill Transported soil into TFS Backfilled in TFS								
System Stop Time		continuous											
Total Hrs Monitored		24			Decconned dump trucks Tarped dump trucks Stockpiled clean soil Operated hoe-ran in TFS Loaded out soil from TFS								
System Calibrations (Time/Status)		Ok 0635-0924											
Date	Alert Trigger	Station	Start Time	End Time	# of 15-min Periods	Wind Dir.	Upwind/ Downwind	Upwind Station(s)	15-Minute Downwind-Upwind Concentration Min** Max**		Site Condition	Site Activity During the Period (if applicable)	Actions Taken
2/4/2013	No exceedances												None taken
Comments:													
					PM-10 (15-min)		TVOC (15-min)		TVOC (1-min)		Odor Intensity (15-min)		
					Alert Limit: 100 ug/m ³		3.7 ppm		-		-		
					Action Limit: 150 ug/m ³		5.0 ppm		25 ppm		3 (n-butanol scale)		
Notes:													
* Wind directions are presented by octant (i.e. N, NE, E, SE, S, SW, W, NW).						PM-10 - particulate matter (i.e. dust) less than 10 microns in diameter							
** Upwind minus downwind concentrations are a time specific comparison.						TVOC - total volatile organic compounds							
FAM - Fixed Air Monitoring station location						NA - not applicable							
ug/m ³ - micrograms per cubic meter						ND - no data available							
ppmv - parts per million by volume										Field Representative: R. Marshall			
										Date: 2/4/2013			



**Daily Field Report
Community Air Monitoring Program
Clifton Former MGP Site Operable Unit 2
Borough of Staten Island, New York**

System Operations					General Observations								
Sampling Date: 2/5/2013 System Start Time: continuous System Stop Time: continuous Total Hrs Monitored: 24 System Calibrations (Time/Status): Ok 0635-0924					General Weather Conditions: Overcast w/snow ~ 25°F - -32°F General Description of Site Activities: Health & Safety Meeting Continuous Air Monitoring Operated hoe-ram in TFS Received delivery of clean backfill Transported soil into TFS Backfilled in TFS Decanned dump trucks Tarped dump trucks Stockpiled clean soil Loaded out soil from TFS								
Date	Alert Trigger	Station	Start Time	End Time	# of 15-min Periods	Wind Dir.	Upwind/Downwind	Upwind Station(s)	15-Minute Downwind-Upwind Concentration Min** Max**		Site Condition	Site Activity During the Period (if applicable)	Actions Taken
2/5/2013	No exceedances												None taken
Comments:													
					PM-10 (15-min)		TVOC (15-min)		TVOC (1-min)		Odor Intensity (15-min)		
					Alert Limit:	100 ug/m ³	3.7 ppm	-	-				
					Action Limit:	150 ug/m ³	5.0 ppm	25 ppm	3 (n-butanol scale)				
Notes:													
* Wind directions are presented by octant (i.e. N, NE, E, SE, S, SW, W, NW).					PM-10 - particulate matter (i.e. dust) less than 10 microns in diameter								
** Upwind minus downwind concentrations are a time specific comparison.					TVOC - total volatile organic compounds								
FAM - Fixed Air Monitoring station location					NA - not applicable								
ug/m ³ - micrograms per cubic meter					ND - no data available								
ppmv - parts per million by volume					Field Representative: R. Marshall								
					Date: 2/5/2013								



Daily Field Report
 Community Air Monitoring Program
 Clifton Former MGP Site Operable Unit 2
 Borough of Staten Island, New York

System Operations					General Observations									
Sampling Date	2/6/2013				General Weather Conditions: Overcast ~ 28°F - ~38°F									
System Start Time	continuous				General Description of Site Activities: Health & Safety Meeting Continuous Air Monitoring Relocated Bin-Blocks Transported soil into TFS Backfilled in TFS									
System Stop Time	continuous				Performed shallow excavation in OU-2 Loaded out soil from TFS									
Total Hrs Monitored	24													
System Calibrations (Time/Status)	Ok 0657-0830													
Date	Alert Trigger	Station	Start Time	End Time	# of 15-min Periods	Wind Dir.	Upwind/Downwind	Upwind Station(s)	15-Minute Downwind-Upwind Concentration Min** Max**		Site Condition	Site Activity During the Period (if applicable)	Actions Taken	
2/6/2013	No exceedances												None taken	
Comments:														
					PM-10 (15-min)			TVOC (15-min)			TVOC (1-min)			Odor Intensity (15-min)
					Alert Limit: Action Limit:	100 ug/m ³ 150 ug/m ³		3.7 ppm 5.0 ppm		- 25 ppm		- 3 (n-butanol scale)		
Notes:														
* Wind directions are presented by octant (i.e. N, NE, E, SE, S, SW, W, NW).							PM-10 - particulate matter (i.e. dust) less than 10 microns in diameter							
** Upwind minus downwind concentrations are a time specific comparison.							TVOC - total volatile organic compounds							
FAM - Fixed Air Monitoring station location							NA - not applicable							
ug/m ³ - micrograms per cubic meter							ND - no data available							
ppmv - parts per million by volume							Field Representative: R. Marshall							
							Date: 2/6/2013							
Page 1 of 1														

Daily Field Report Community Air Monitoring Program Clifton Former MGP Site Operable Unit 2 Borough of Staten Island, New York

System Operations					General Observations								
Sampling Date	2/7/2013				General Weather Conditions: Overcast ~ 26°F - ~32°F General Description of Site Activities: Health & Safety Meeting Continuous Air Monitoring Relocated Bin-Blocks Transported soil into TFS Backfilled in TFS Shallow Excavation performed in OU-2 Roller operated in TFS Bulldozer spread backfill in TFS Delivery of Gravel Density test performed in TFS								
System Start Time	continuous												
System Stop Time	continuous												
Total Hrs Monitored	24												
System Calibrations (Time/Status)	Ok 0809-0911												
Date	Alert Trigger	Station	Start Time	End Time	# of 15-min Periods	Wind Dir.	Upwind/ Downwind	Upwind Station(s)	15-Minute Downwind-Upwind Concentration Min** Max**		Site Condition	Site Activity During the Period (if applicable)	Actions Taken
2/7/2013	No exceedances												None taken
Comments:													
					PM-10 (15-min)					TVOC (15-min)		TVOC (1-min)	Odor Intensity (15-min)
					Alert Limit:	100 ug/m ³				3.7 ppm		-	-
					Action Limit:	150 ug/m ³				5.0 ppm		25 ppm	3 (n-butanol scale)
Notes:													
* Wind directions are presented by octant (i.e. N, NE, E, SE, S, SW, W, NW).				** Upwind minus downwind concentrations are a time specific comparison.				PM-10 - particulate matter (i.e. dust) less than 10 microns in diameter					
FAM - Fixed Air Monitoring station location				ug/m ³ - micrograms per cubic meter				TVOC - total volatile organic compounds					
ppmv - parts per million by volume								NA - not applicable					
								ND - no data available					
												Field Representative: C. John	
												Date: 2/7/2013	



Daily Field Report

Community Air Monitoring Program

Clifton Former MGP Site Operable Unit 2

Borough of Staten Island, New York

System Operations					General Observations								
Sampling Date	2/8/2013	General Weather Conditions: Overcast w/snow ~ 31°F - -41°F											
System Start Time	continuous	General Description of Site Activities:											
System Stop Time	continuous	Health & Safety Meeting				Relocated TFS							
Total Hrs Monitored	24	Continuous Air Monitoring				Operated roller in TFS							
System Calibrations (Time/Status)	Ok 0720-0924	Relocated skid plates				Leveled soil in TFS							
		Transported clean soil from inside of TFS				Received delivery of gravel							
		Backfilled in TFS				Removed TIGG unit from TFS							
		Relocated bin blocks											
Date	Alert Trigger	Station	Start Time	End Time	# of 15-min Periods	Wind Dir.	Upwind/ Downwind	Upwind Station(s)	15-Minute Downwind-Upwind Concentration		Site Condition	Site Activity During the Period (if applicable)	Actions Taken
2/8/2013	No exceedances								Min**	Max**			None taken
Comments:													
				PM-10 (15-min)		TVOC (15-min)		TVOC (1-min)		Odor Intensity (15-min)			
		Alert Limit:		100 ug/m ³		3.7 ppm		-		-			
		Action Limit:		150 ug/m ³		5.0 ppm		25 ppm		3 (n-butanol scale)			
Notes:													
* Wind directions are presented by octant (i.e. N, NE, E, SE, S, SW, W, NW).						PM-10 - particulate matter (i.e. dust) less than 10 microns in diameter							
** Upwind minus downwind concentrations are a time specific comparison.						TVOC - total volatile organic compounds							
FAM - Fixed Air Monitoring station location						NA - not applicable				Field Representative: C. John			
ug/m ³ - micrograms per cubic meter						ND - no data available				Date: 2/8/2013			
ppmv - parts per million by volume													
												Page 1 of 1	

