



455 Winding Brook Drive
Suite 201
Glastonbury, CT 06033

Ph: (860) 368-5300
Fax: (860) 368-5307

Memorandum

To: Andrew Prophete (National Grid NY)

From: Brian Skelly

Copy to: Richard Dana and R. Scott Deyette (NYSDEC)
Chris Schroer (EA Engineering)
Andrew Rizk (Louis Berger)
Stephanie Selmer (NYSDOH)
Dave Boram and Thor Helgason (de maximis)
Ted Leissing (National Grid NY)
Shail Pandya (AECOM)
Ronell Marshall and Clayton John (GEI Consultants, Inc.)

Date: October 23, 2012

Regarding: Weekly Community Air Monitoring Report
Clifton Former MGP Site - Operable Unit 2 (OU-2)
October 13, 2012 through October 19, 2012

Dear Andrew:

This report includes a summary of data collected during implementation of the Community Air Monitoring Plan (CAMP) at the Clifton Former MGP Site Operable Unit 2 (OU-2) in Staten Island, New York. Data collected are discussed in relation to remediation activities that occurred between October 13, 2012 and October 19, 2012.

There were no fifteen-minute exceedances of the Total Volatile Organic Compounds (TVOC), Particulate Matter (PM-10) [dust], or odor action levels associated with ground intrusive site activities during this reporting period. The tables and figures accompanying this report summarize air monitoring results related to the action levels described by the CAMP Work Plan (AECOM, 2011 and GEI, 2012).

The following information is summarized in this report:

- Site construction activities
- Daily maximum 15-minute average concentrations of TVOC and PM-10 (dust) at each fixed station
- Elevated concentrations (if any)
- Meteorological data

Site Construction Activities

Construction activities during this reporting period included:

- Backfilled in Temporary Fabric Structure (TFS)
- Deconned dump trucks
- Excavated in TFS
- Excavated near FAM#4 along Willow Avenue
- Leveled terrain South of TFS
- Leveled terrain along the Willow Ave
- Loaded out soil from TFS
- Loaded out soil from shallow excavation via dump trucks
- Received deliveries of clean backfill
- Relocated Equipment
- Relocated FAM#3, FAM#4, and FAM#6
- Stockpiled clean backfill
- Tarped dump trucks

Data collection

Real-time fixed station monitoring for TVOC and PM-10 (dust) was performed on the OU-2 site perimeter at six locations (FAM#1 through FAM#6). Four AirLogics Classic stations equipped with gas chromatographs (GCs) were operated at FAM#2, FAM#3, FAM#4, and FAM#5 and two AirLogics Light stations were operated at FAM#1 and FAM#6.

Table 1 summarizes the target concentrations for action levels and Site Conditions described by the CAMP. Table 2 provides a daily summary of maximum fifteen-minute average ambient air concentrations from each station. The daily reports appended to this report depict more detailed and time-specific comparison of upwind and downwind measurements and site activities that is needed to determine the Site Condition.

Upwind and downwind ambient air verification samples were collected on October 17, 2012. Meteorological data collected at the on-site weather station are included in this report as Figures 1 through 4 which show a directional wind rose for the period and temperature, relative humidity, and wind speed time series for the period.

If you have any questions regarding the information in this report, please contact me.

Weekly Community Air Monitoring Report
Clifton Former MGP Site Operable Unit 2 (OU-2)
October 13, 2012 through October 19, 2012
October 23, 2012
Page 3

References

AECOM (2011). Appendix A of CERP Community Air Monitoring Plan (CAMP) Former Manufactured Gas Plant Operable Unit - 2 Remediation. Clifton, New York. August.

GEI Consultants, Inc (2012). Community Air Monitoring Plan: Clifton Former Manufactured Gas Plant Site – Operable Unit 2, Borough of Staten Island, New York. February.

New York State Department of Environmental Conservation (2010). DER-10 / Technical Guidance for Site Remediation and Investigation. Washington: Division of Environmental Remediation, December. Appendix 1-A. May.

Table 1 - Action Levels and Site Conditions
Community Air Monitoring Program
Clifton Former MGP Site Operable Unit 2
Borough of Staten Island, New York

	Alert Level	Action Level	Site Condition 1	Site Condition 2	Site Condition 3
TVOC (15-minute)	3.7 ppm	5.0 ppm	< 3.7 ppm	≥ 3.7 ppm, < 5.0 ppm	≥ 5.0 ppm
TVOC (1-minute)	NA	25 ppm	< 25 ppm	NA	≥ 25 ppm
PM-10 (15-minute)	100 ug/m ³	150 ug/m ³	< 100 ug/m ³	≥ 100 ug/m ³ , < 150 ug/m ³	≥ 150 ug/m ³
Odor (15-minute)	Odors / Complaints	NA	No odors	NA	3 (n-butanol)
HCN (15-minute)	Visual Detection	NA	< 0.6 ppm	≥ 0.6 ppm (4-gas meter)	≥ 0.6 ppm (Draeger tube)
Naphthalene (15-minute)	NA	NA	< 440 ug/m ³	≥ 330 ug/m ³ , < 440 ug/m ³	≥ 440 ug/m ³

Notes:

¹ Alert Levels are not established by the NYSDOH or NYSDEC and are internally established concentration levels for total volatile organic compounds. Alert Levels are set below the levels established by the NYSDOH so that actions can be taken prior to exceeding a NYSDOH threshold. An Alert Level serves as a screening tool to trigger contingent measures if necessary, to assist in minimizing off-site transport of contaminants during remedial activities

² Response Levels and Action Levels are not defined in Appendix 1A of the New York State Department of Environmental Conservation *DER-10 / Technical Guidance for Site Investigation and Remediation* (NYSDEC, 2010)

ug/m³ - micrograms per cubic meter

ppmv - parts per million by volume

TVOC - total volatile organic compounds

PM-10 - particulate matter (i.e. dust) less than 10 microns in diameter

HCN - hydrogen cyanide

NA - not applicable

Table 2. Daily Maximum 15-Minute Average Concentrations of TVOC and PM-10
 Community Air Monitoring Program
 Clifton Former MGP Site Operable Unit 2
 Borough of Staten Island, New York

Date	TVOC						PM-10					
	(ppm)						(ug/m ³)					
	FAM#1	FAM#2	FAM#3	FAM#4	FAM#5	FAM#6	FAM#1	FAM#2	FAM#3	FAM#4	FAM#5	FAM#6
10/13/2012	0.3	0.2	0.1	0.0	0.1	0.2	17	6	0	0	6	0
10/14/2012	0.2	0.0	0.1	0.0	0.1	0.1	17	9	0	0	8	0
10/15/2012	0.1	0.7	0.3*	0.1	0.1	0.1	9	9	0	1	14	1
10/16/2012	0.1	0.5	0.2	0.1	0.1	0.1	9	10	62	0	9	0
10/17/2012	0.1	0.1	0.2	0.1	0.1	0.1	31	10	0	13	55	1
10/18/2012	0.2	0.6	0.2	0.1	0.1	0.2	36	10	0	6	19	1
10/19/2012	0.1	0.1	0.0	0.0	0.0	0.2	19	10	0	5	22	0
Average	0.2	0.3	0.1	0.1	0.1	0.1	20	9	9	4	19	0
Maximum	0.3	0.7	0.2	0.1	0.1	0.2	36	10	62	13	55	1

Notes:

FAM - fixed air monitoring station location

ug/m³ - micrograms per cubic meter

ppmv - parts per million by volume

TVOC - total volatile organic compounds

PM-10 - particulate matter (i.e. dust) less than 10 microns in diameter

* No recordable data for TVOC at FAM#3 from 06:48 - 17:48 on 10/15/2012 due to performing maintenance on the equipment.

Figures 1-4
Meteorological Data
Weekly Community Air Monitoring Report
Clifton Former MGP Site Operable Unit 2
Borough of Staten Island, New York

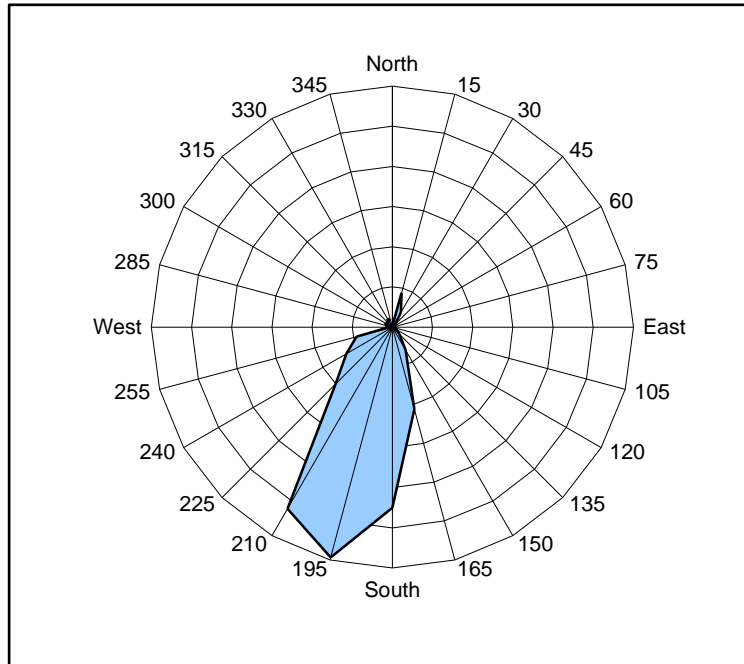


Figure 1. Wind rose for the period 10/13/12 through 10/19/12 collected during CAMP implementation at the Clifton Former MGP Site - Operable Unit 2. Wind direction data used to create the wind rose were calculated from 1-minute data.

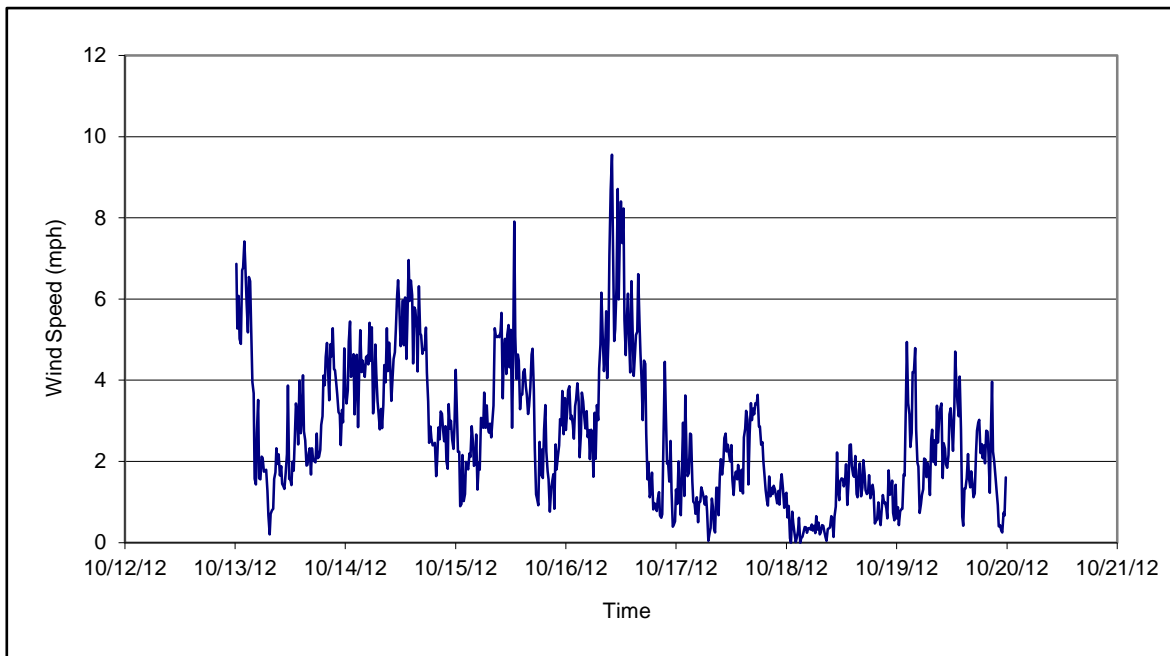


Figure 2. Wind speed for the period 10/13/12 through 10/19/12 collected during CAMP implementation at the Clifton Former MGP Site - Operable Unit 2. Data are 15-minute averages.

Figures 1-4
Meteorological Data
Weekly Community Air Monitoring Report
Clifton Former MGP Site Operable Unit 2
Borough of Staten Island, New York

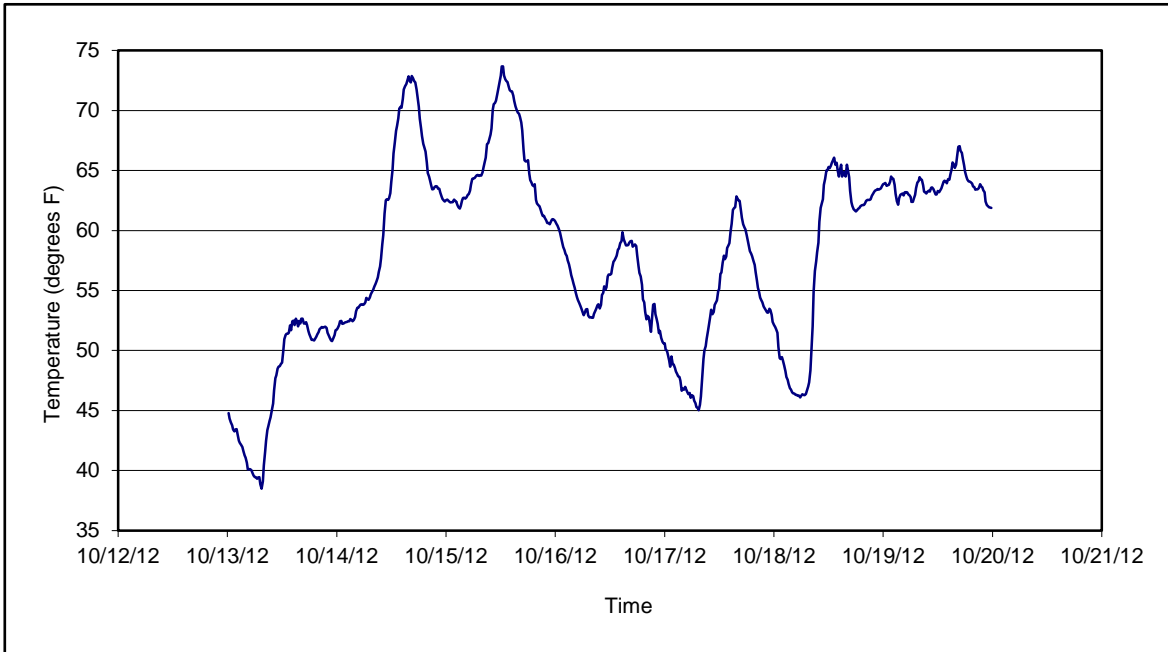


Figure 3. Temperature for the period 10/13/12 through 10/19/12 collected during CAMP implementation at the Clifton Former MGP Site - Operable Unit 2. Data are 15-minute averages.

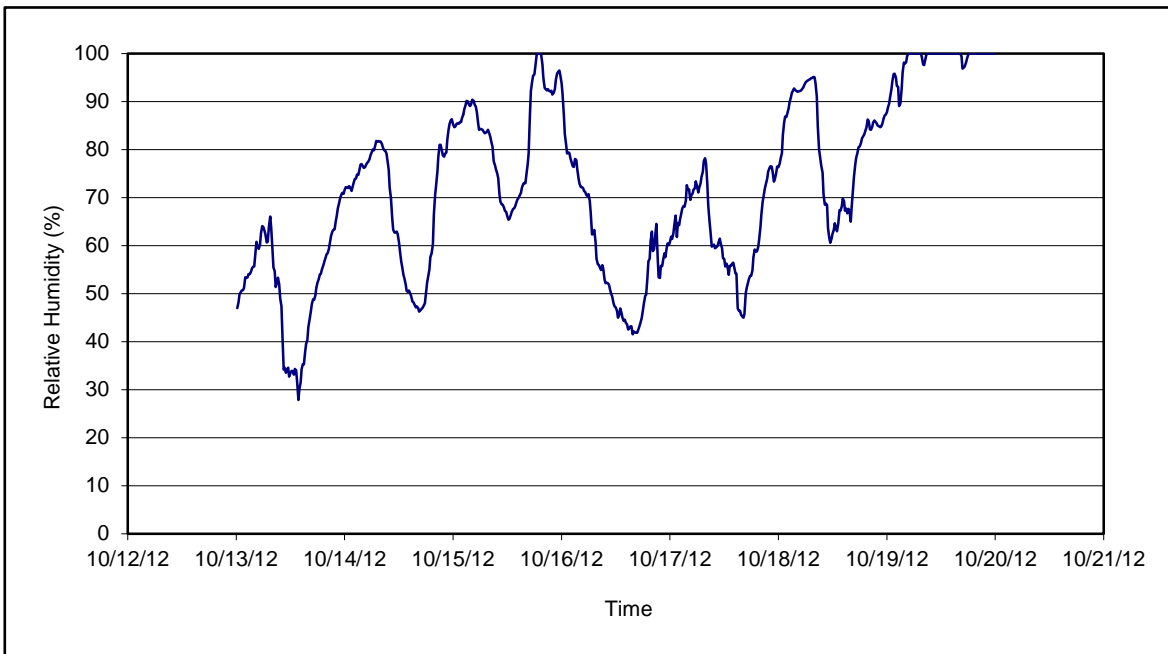


Figure 4. Relative humidity for the period 10/13/12 through 10/19/12 collected during CAMP implementation at the Clifton Former MGP Site - Operable Unit 2. Data are 15-minute averages.

